

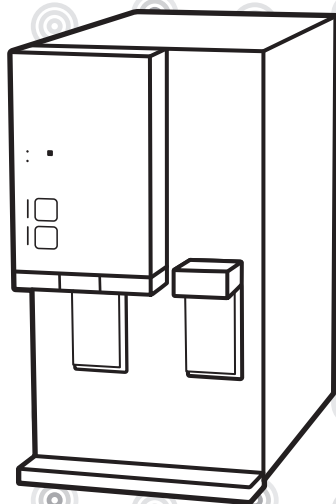


**COWAY LOVES THE PLANET**  
This paper can be recycled.

# Coway

## Filtered Water Ionizer CHPE-250NF

- This product can not be used if the voltage is different from that mentioned in the rating plate.
- For your safety and proper use of the product, please read this User's Manual before use.
- Warranty card is included in this User's Manual.



# FEATURES

1

## Various and useful functions

It has not only water filtering functions but also ion water generating functions so it increases customer satisfaction.



2

## 5-step ambient/ion water filtering system

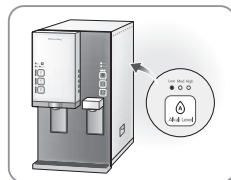
NF membrane filter enhances 5-step ambient/ion water filtering system .



3

## Alkali density control function

It is possible to control alkali density(weak→medium→strong) with Alkali level button.



4

## Antibacterial system in water tank

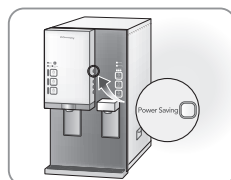
Antibacterial filter in water tank prevents micro-organism from multiplying.



5

## Safety lock features

Hot water lock function keeps children from being burned hot water so children can use the device safely. And in button lock mode, all functions are locked so it is useful when you clean the device.



# DEAR CUSTOMERS

Thank you for using our **Filtered Water Inonizer**.

Please read this Users' Manual to use and maintain the product correctly. If you encounter a problem while using the product, you may solve the problem referring to the User's Manual. As this manual contains the product warranty card, please keep it in a safe place.



The CHPE-250NF is tested and certified by WQA according to NSF/ANSI 42, 53, and 372.

## CONTENTS

### FOR INFORMATION

- | 03 | **SAFETY INFORMATION**
  - Danger
  - Warning
  - Caution
- | 07 | **PARTS NAME**
- | 08 | **WATER FILTRATION PROCESS**

### MAINTENANCE

- | 18 | **INSTALLATION**
- | 20 | **CLEANING METHOD**
  - Storage tank
  - Tray
- | 23 | **FILTER REPLACEMENT**
- | 24 | **FILTER REPLACEMENT METHOD**

### HOW TO USE

- | 09 | **INSTALLATION PRECAUTIONS**
- | 11 | **BUTTONS AND INDICATORS**
- | 13 | **HOW TO USE**

### OTHERS

- | 25 | **TROUBLESHOOTING**
- | 27 | **SPECIFICATION**
- | 28 | **WATER FLOW DIAGRAM**
- | 29 | **WARRANTY CARD**

- Please keep the User's Manual where it can be readily reached or found -

# SAFETY INFORMATION

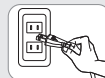
---

## **Be careful to keep this safety information.**

Please read this information to prevent property loss and ensure your safety.



for 220 V - 240 V~ use only



for 120 V~ use only

## **▲ Danger : If not observed, serious injury or even death could occur.**

- Do not use a damaged power cord or plug, and loose outlet.
- Do not pull the power cord.
- Do not carry the unit by its power cord.
- Do not touch the power plug with a wet hand.
- Do not forcefully bend the power cord or put it under a heavy object to prevent it from being damaged or deformed.
- Do not connect and pull out the power plug repeatedly.
- Remove any dust or water off in the pin and contacts of the power plug.
- Do not plug into an outlet that is being used by several other appliances.  
Use an electrical outlet dedicated.
- When you don't use for a long time, close the main water supply valve and unplug.
- Do not attempt to repair or modify the power cord at your discretion.
- In the case the power cord is damaged, do not replace the cord yourself. Call Coway Service Center to have it replaced.
- Do not install near a heating device.
- When the water is coming inside of the product or there is a puddle on the product, call Service Center after closing the supplying valve and unplugging.



- 
- If our product produces a strange noise or odd smell, immediately unplug from the electrical outlet and call our Service Center.
  - Do not put the candle, a light for cigarette on the products.
  - Do not place any containers with water, medicine, food, small metallic objects, or any flammable material on the top of the product.
  - Clean after unplugging.

## SAFETY INFORMATION

---

### **▲ Warning : If not observed, serious injury or property damage could occur.**

- If the electric outlet is wet, carefully unplug the unit and let the electric outlet completely dry before subsequent use.
- Unplug the product before repair, inspection, or parts replacement.
- Do not install the product on a sloped floor.
- The water cooler is intended to be plugged into a receptacle of the ground fault circuit interrupting type.
- Do not press the product by constraint or impact.
- Do not clean by spraying the water directly or don't wipe the product using the benzene and thinner.
- Do not repair, disassemble, or modify.
- This appliance is not intended for use by persons (including children) with reduced physical, sensory or mental capabilities, or lack of experience and knowledge, unless they have been given supervision or instruction concerning use of the appliance by a person responsible for their safety.
- Children should be supervised to ensure that they do not play with the appliance.
- This appliance can be used by children aged from 8 years and above.
- The new hose-sets supplied with the appliance are to be used and that old hose-sets should not be reused.

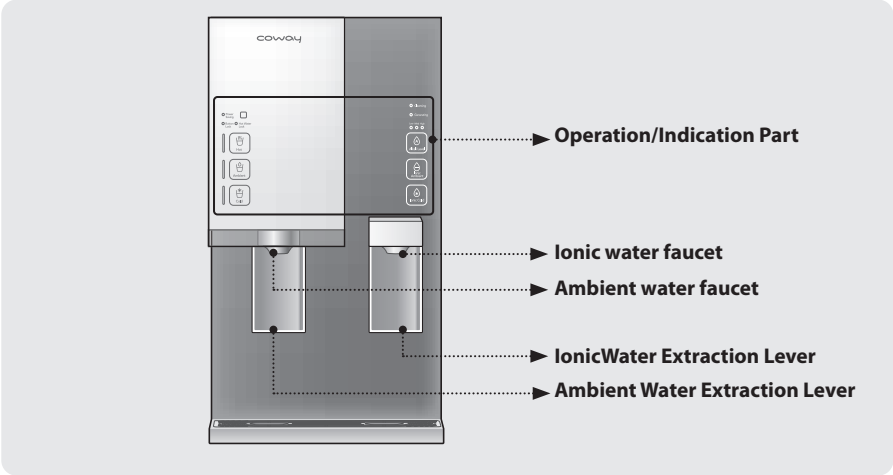
//////////

**⚠ Caution : If not observed, minor physical injury or property damage may occur as a result.**

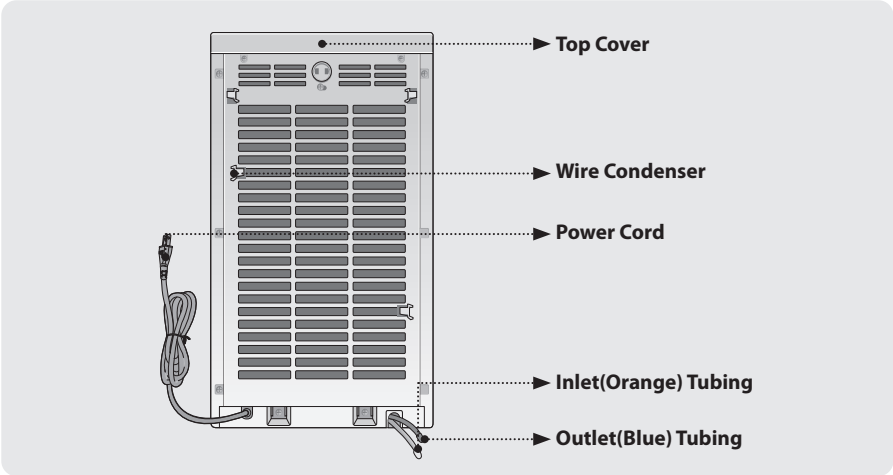
- The filtration device installation shall comply with applicable state and local regulations.
- Use after closing the water tank cover completely inside of the product.
- To drink the filtered, change the filter according to the filter replacement cycle.
- When you don't use for a long time, use after draining the saved water completely and emptying the newly ambient water once again.
- Do not use filtered water for the water exchange of an aquarium or a fishbowl.
- After moving the product or replacing the Plus Inno-sense filter, the black powder can be remained in the inner bottom of the water tank.
- Do not use with water that is microbiologically unsafe or of unknown quality without adequate disinfection before or after the system.
- Cleaning and user maintenance shall not be made by children without supervision.

# PARTS NAME

## Front



## Rear



# WATER FILTRATION PROCESS

The filter is the core technology of the filtration system.

If you don't use qualifying filter or if you use an old filter that has expired, the system performance may degrade.

## The 5-step water filtering system (CHPE-250NF)

### Step 1, 2 : NEO-SENSE FILTER

### Step 3 : NF MEMBRANE FILTER

### Step 4 : PLUS INNO-SENSE (E) FILTER

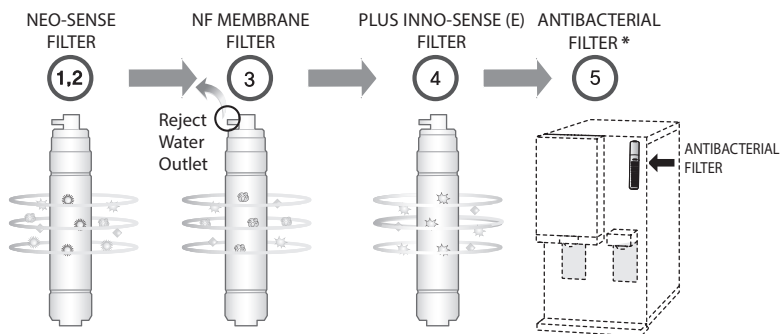
### Step 5 : ANTIBACTERIAL FILTER \*

The CHPE-250NF conforms to NSF/ANSI 42 and 53 for the reduction of Aesthetic Chlorine, Taste and Odor, and VOCs as verified and substantiated by test data.

The CHPE-250NF conforms to NSF/ANSI 372 for low lead compliance.

The CHPE-250NF registered in California.

See performance data sheet for individual contaminants and reduction performance.



\* The Antibacterial filter contains silver, which is known to inhibit the propagation of microorganisms and to maintain the integrity of the filter.



Tips

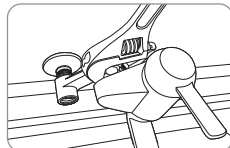
#### Uses of reject water

- The reject water should be used for cleaning the restroom, the house, clothes, or purposes other than drinking.
- Never use the reject water for a drinking water or a cook.

# INSTALLATION PRECAUTIONS

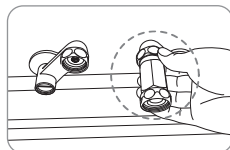
## The summary for the proper installation of the water filtration device

1. Close main water supply valve to separate the faucet.



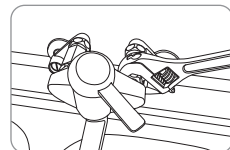
2. Wind the teflon tape on the adaptor and fit it to the pipe.

⚠ Do not turn the water pipe.



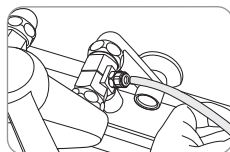
3. Connect the faucet with the adaptor.

⚠ Shall install the adaptor with connector on the cold water pipe.

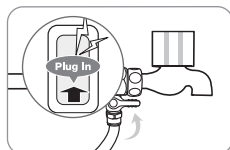


4. Connect 1/4 inch orange tubing with the connector on the adaptor.

⚠ Flush water through each filter at least 5 minutes before Connection.



5. Open the feed valve to supply water to the filtration system.



## Please check before use!

- ⚠ Only connect the power cord to the voltage rating that matches it on the rating plate.



- **Open the main water supply valve.**

The main water must be supplied to operate the water filtration device normally.

- **After installing the product**

Get rid of the saved water above the full water in the inner water tank 2 times or more to use.

- **When the indicator in the indication part is turned off**

When the indicator in the indication part is turned off, check if the power supply was stopped due to the power failure or other cause.

- **Regularly filter replacement**

It is important to replace the filter regularly to drink the pure water. If the filter is overused beyond its service life, the performance of the water filtration device deteriorate, Do not miss the filter replacement cycle.

- **When you didn't use for a long time**

If you saved the water for a long time or you didn't use, drain the water inside of the water filtration device completely and remove the newly filtered water one time to use.

- **When you don't want to use for a long time**

Close the main water supply valve and unplug.

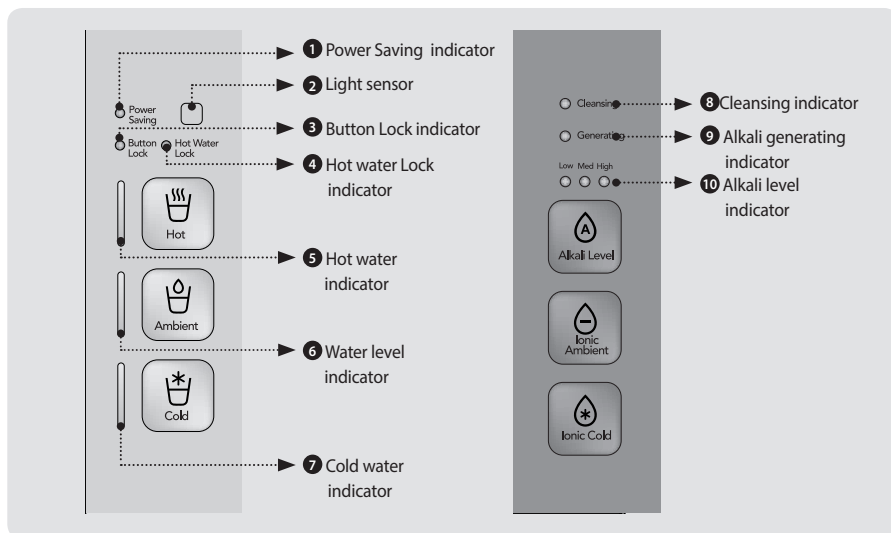


Tips

When you don't use for a long time, close the main water supply valve and unplug.

# BUTTONS AND INDICATORS

## INDICATORS



### 1 Power Saving indicator

The indicator is on when Power Saving mode is on.



### 2 Light sensor

It detects light around the device.



### 3 Button Lock indicator

The indicator is on when Button Lock mode is on.



### 4 Hot water Lock indicator

The indicator is on when Hot water Lock is on.



### 5 Hot water indicator

The indicator is on when hot water functions is on. More indicators are on, water is hotter.



### 6 Water level indicator

The indicator lights on depending on water level.



### 7 Cold water indicator

The indicator is on when cold water functions is on. More indicators are on, water is colder.



### 8 Cleansing indicator

The indicator is on when electrolysis vessel cleaning function is on.



### 9 Alkali generating indicator

The indicator is on when cold/ambient ionic water is extracted.

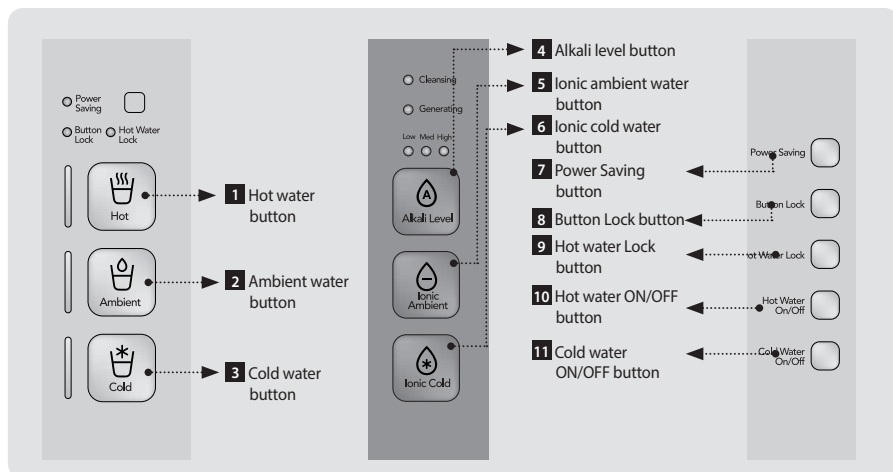


### 10 Alkali level indicator

The indicator lights on depending on alkali level (weak, medium, strong).



## BUTTONS



### 1 Hot water button

Press the button when extracting hot water.



### 3 Cold water button

Press the button when extracting cold water.



### 5 Ionic ambient water button

Press the button when extracting ionic ambient water.



### 7 Power Saving button

Press the button for more than 2 seconds when turning on/off Power Saving mode.



### 9 Hot water Lock button

Press the button for more than 2 seconds when locking hot water function.



### 11 Cold water ON/OFF button

Press the button for more than 2 seconds when turning on/off cold water function.



### 2 Ambient water button

Press the button when extracting ambient water.



### 4 Alkali level button

Press the button when controlling alkali level(weak, medium, strong).



### 6 Ionic cold water button

Press the button when extracting ionic cold water button.



### 8 Button Lock button

Press then button when locking all the functions.



### 10 Hot water ON/OFF button

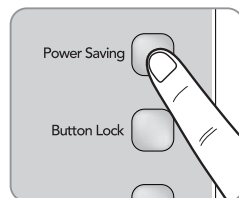
Press the button for more than 2 seconds when turning on/off hot water function.

# HOW TO USE

## ■ How to use Power Saving mode

Press the Power Saving button for more than 2 seconds, then Power Saving indicator is on. In Power Saving mode, the motor and heater moves less in night so power consumption decreases. When Light sensor detects the night, Power Saving indicator blinks.

\* In Power Saving mode, temperature of cold water is little bit higher than in day time.



## ■ How to use Lock mode

### - Hot water Lock

Press Hot water Lock for more than 2 seconds, Hot water indicator blinks and Hot water Lock is on.

\* In Hot water Lock mode, Hot water button doesn't work and alarm rings.

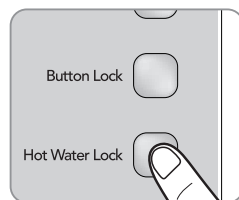
\* Hot water isn't extracted even if Extraction button is pressed.

### - Button Lock

Every function doesn't work in Button lock mode and alarm rings if any button is pressed. Use this function when you clean the device. Press Button Lock button for 1 second, then indicators blink and Button Lock is on.

### - Release Lock mode

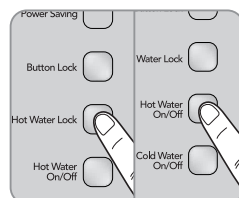
Press Hot water Lock/Button Lock button for 1 second to release Lock mode.



## ■ To use Hot water function

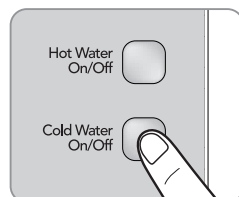
Press Hot water button for more than 2 seconds and check if Hot water indicator is on. Press the button again to turn off Hot water function.

\* It takes about 30 minutes to extract hot water after turning on Hot water function.



## ■ To use Cold water function

Press Cold water button for more than 2 seconds and check if Cold water indicator is on. Press the button again to turn off Cold water function.

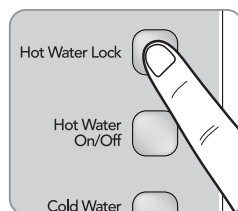


## ■ How to use Silent mode

Press Hot water button for more than 5 seconds to activate Silent mode. In Silent mode, alarm sound doesn't ring.

\* To deactivate Silent mode, Press Hot water button for more than 5 seconds again.

\* Even in silent mode, Power Saving, Lock, Hot water ON/OFF, Cold water ON/OFF sound rings.

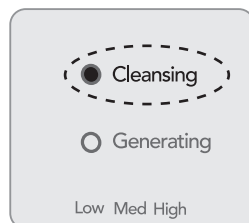
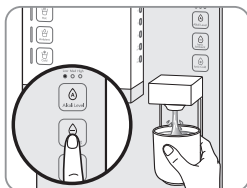


## ■ Electrolysis vessel cleaning function

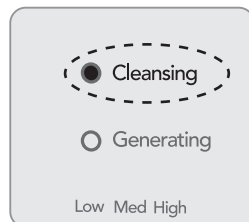
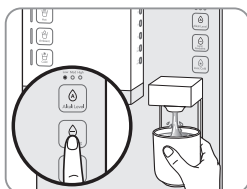
The auto electrolysis vessel cleaning function is provided to keep the vessel clean and protect the product. During electrolysis vessel cleaning, the cleaning indicator is turned on.

- ① If no ionized water is extracted for 1 minute after ionized water is extracted, the vessel is cleaned automatically.
- ② If the stop period exceeds 7 hours after water is extracted, the vessel is cleaned automatically.

- If no ionized water is extracted for 1 minute after ionized water is extracted, the vessel is cleaned automatically.



- If the stop period exceeds 7 hours after water is extracted, the vessel is cleaned automatically.



TIPS

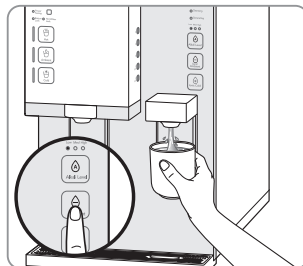
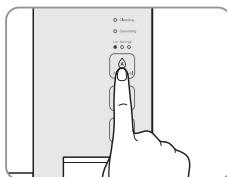
- During electrolysis vessel cleaning or ionized water extracting, the device could make some noise. It doesn't mean product malfunction.
- Ionized water isn't extracted during electrolysis vessel cleaning.

# HOW TO USE

## Ionic ambient water

Press Alkali level button and choose Alkali level.

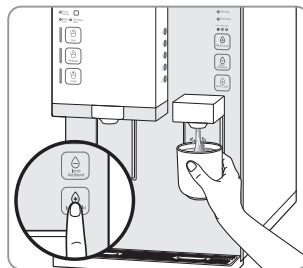
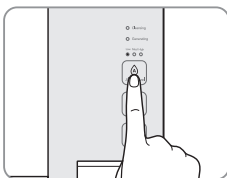
Press Ionic ambient water button and push Extraction lever.



## Ionic cold water

Press Alkali level button and choose Alkali level.

Press Ionic cold water button and push Extraction lever.

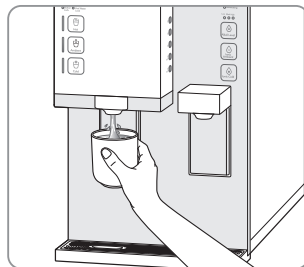
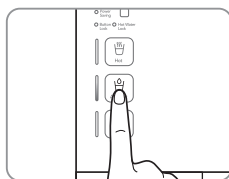


### TIPS

- Safety Lock : Automatically stops extraction after 1 minute continuous extracting.
- Ionic ambient water functions is set when you use the device for the first time.
- Ionic cold water is set automatically when Cold water function is on.
- **Ionic ambient or cold water setting is maintained.**
- According to environment or user's drinking habit, the first cup maybe not cold enough. It doesn't mean product malfunction and you can have cold water from second cup.
- Alkali level is set as 'High' when you use the device for the first time.
- **Alkali level setting is maintained after you drink ionic water.**
- Ionic water isn't extracted when water level is low.

## Ambient water

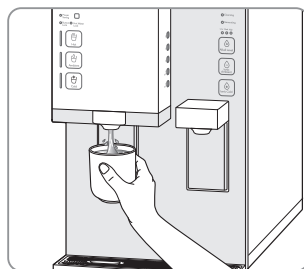
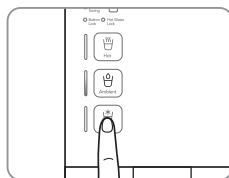
Press Ambient water button and push the lever.



- Safety Lock : Automatically stops extraction after 1 minute continuous extracting.
- Ambient water setting is maintained after you drink ambient water.

## Cold water

Press Cold water button and push the lever.

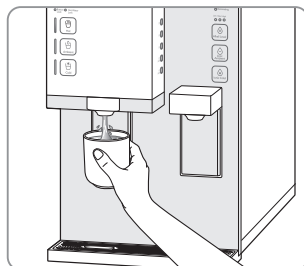
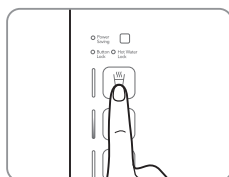


- If cold water isn't extracted, check if Cold water function is on.
- Cold water setting is maintained after you drink cold water.

# HOW TO USE

## Hot water

Press Hot water button and push the lever.



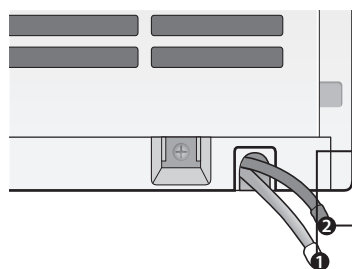
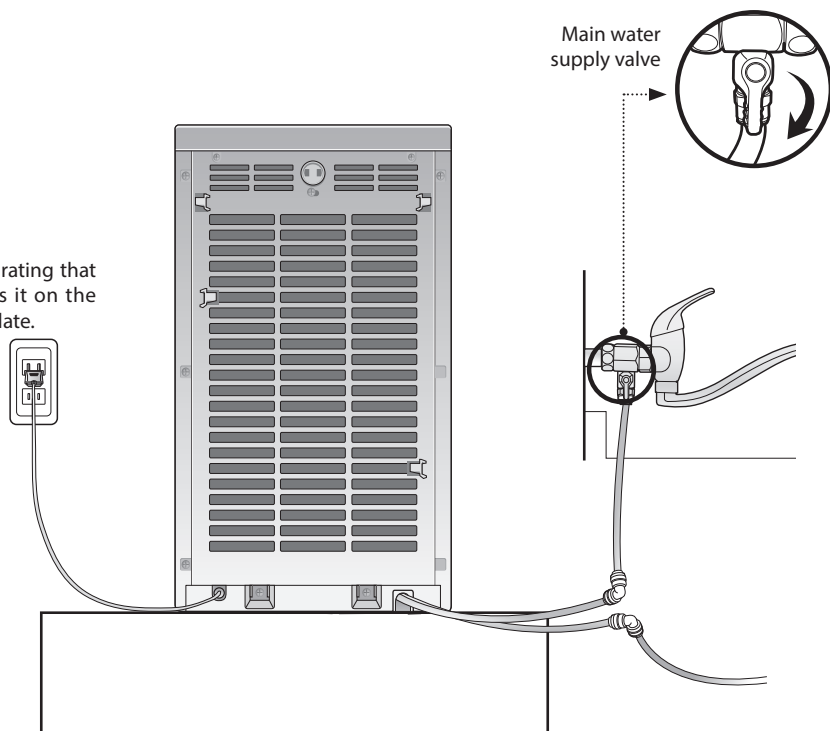
### TIPS

- If hot water isn't extracted, check if Hot water function is on.
- Hot water setting automatically goes back to previous setting after seconds.  
(For example, if you drank ambient water before you drink hot water, the setting goes back to Ambient water setting.)
- Hot water extraction volume could decrease when water level is low.

# INSTALLATION

Follow the instruction for installation

voltage rating that matches it on the rating plate.



Connect the orange color inlet tubing ① to the tap water supplying pipe. Connecting the outlet tubing ②.

→ Inlet tubing (Orange)

→ Outlet tubing (Blue)

# INSTALLATION

---

## Be cautious!

### ■ Water filtration device installation place 1

Please install the water filtration system not at a rough place, a damp place, a place where the unit is exposed to the direct sunlight, a place where dust is present, or a place that the water drops.

### ■ Water filtration device installation place 2

Please install at the place where it is 10 cm or more off from the wall and the bottom is flat and firm.

### ■ After installing the water filtration system

Filtered water : Fill the water tank with the filtered water and remove the water twice or more if necessary after installing it.

Ion water : Fill the water tank with the ionized water and remove the water twice or more if necessary after installing it.

Removing moisture : Remove moisture and dust from the operating, display and connecting parts of the front cover.

### ■ Cold water plumbing

Please connect to the cold water pipe necessarily. (If you connect to the warm water pipe, the filter can be damaged.)

### ■ Movement and installation

When the position is moved, connect the power cord when 30 minutes passes after installing.



#### Tips

To maintain optimal product performance, consult a Coway engineer for the detailed installation methods.

⚠ There may be some water remaining inside of the filter which was used to test the product during inspection process at the factory.  
Please feel at easy and use as it isn't the used product.

⚠ Don't reuse the main water supply valve and hose that was previously used when you install the product.



# CLEANING METHOD

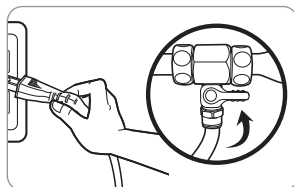
## Storage tank

1. Turn it off by pressing the cold mode button at the front panel of the product for about 3 seconds and unplug the power cord. Close the main water supply valve.



Tips

Take care that water does not enter the product other than through the water hose.

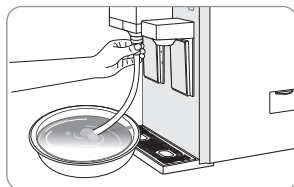


2. Please drain and store the water inside of the water filtration device completely using the draining hose.

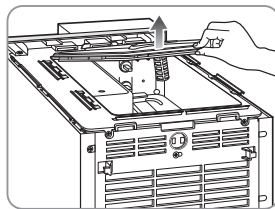
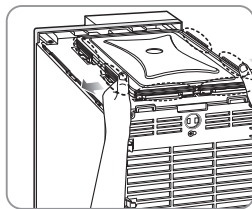
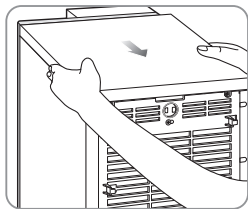


Tips

Please drain and store the water inside of the water filtration device completely using the draining hose.

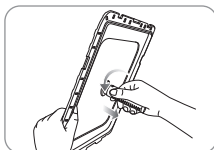


3. Slide the top cover of the product backwards, open the fixing latches of the internal water tank, and then open the cover.

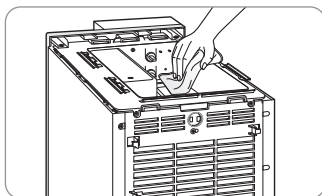


# CLEANING METHOD

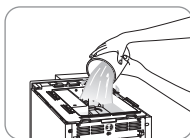
4. Separate the antibacterial filter \* from the bottom of the cover of the internal water tank and use the stored water to clean it.



5. Please wipe the surface of the storage tank with a soft cloth.



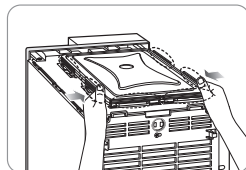
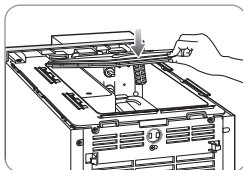
6. Drain the water completely using the draining hose after washing out the internal water tank with the stored water.



Tips

You can drain the water within the internal water tank completely by lowering the draining part cover at the front and connecting the draining hose (the continuous extraction hose).

7. After installing the antibacterial filter \* at the bottom of the cover of the internal water tank, close the internal water tank cover. Lock the fixing latches of the internal water tank and close the cover.



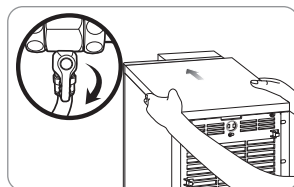
\* The Antibacterial filter contains silver, which is known to inhibit the propagation of microorganisms and to maintain the integrity of the filter.



Tips

Because locking the fixing latch of the internal water tank incorrectly may cause the alien substances or bacteria to enter, please make sure that the fixing latches are locked correctly.

8. Close the top cover, plug in the power cord and open the water supply valve.



Tips

- ⚠ **Close the storage tank cover completely.**  
A worm or a foreign body can be entered.

- ⚠ **When you clean the storage tank, don't use the medicine or the detergent.**

If you don't clean the medicine or the detergent cleanly, it can be harmful to the body.

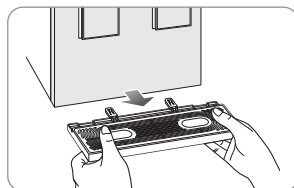
- Keep the surroundings cleanly and clean the storage tank once per two months.



## Tray

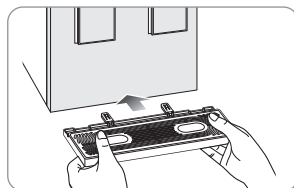
### 1. Tray separation method

The tray can be separated easily with lifting up the front part of the tray and taking out.



### 2. Tray assembling method

Clean the tray and then insert it into the groove at the bottom of the front of the product slightly to install it.



# FILTER REPLACEMENT

## ■ Filter

The life of the water filtration system is the filter. It isn't the legitimated filter or you use too long even if it is the legitimated filter, the filter performance can be lowered.  
Please change to the legitimated filter according to the replacement cycle.

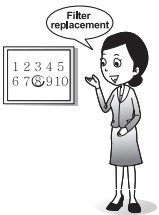


## ■ Filter replacement cycle

If the filter is not regularly replaced, it may degrade the water quality from the product. The filter replacement cycle depending on the main water quality can be shortened rater than the expected replacement cycle.

### CHPE-250NF

Part No.	Names of Filter	Usable Period
CNFN8S	Neo-sense filter	6 months
CNMFN8S-40	NF Membrane filter	18~24 months
CIFN8S-PLUS-E	Plus Inno-sense (E) filter	16~18 months
CAF-03	Antibacterial filter *	12 months



\* The Antibacterial filter contains silver, which is known to inhibit the propagation of microorganisms and to maintain the integrity of the filter.

## ■ About filter replacement cycle

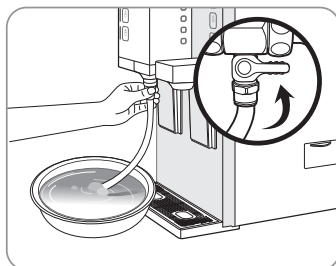
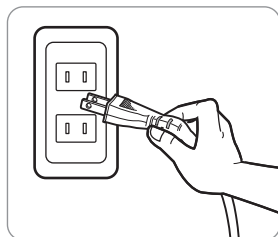
The filter replacement cycle described above is not the filter quality warranty period but the expected cycle (life) that the filter shows its original performance.

**Therefore, the filter replacement cycle may be reduced for the area with the poor water quality or more application.**

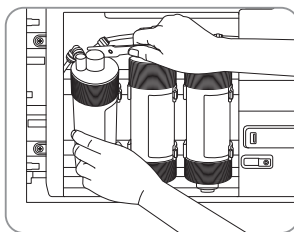
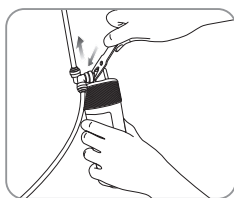


## FILTER REPLACEMENT METHOD

1. Close the main water supply valve after unplugging the power cord and drain the water inside of the internal water tank of the water filtration device (see p19).



2. After separating the fitting connected to the filter to replace, please replace the filter. (Separate the fitting using the proper tool.)



Tips

- ⚠ By changing the filter and connecting the fitting and the hose precisely, check that there is no leakage and drain the first filtered water necessarily.



Tips

- ⚠ Please be sure to use a new filter after flushing.
- Neo-sense filter : Assemble it after flushing with running water for about 1 minute.
  - Membrane filter : Assemble it after flushing for about 5 minutes. You have to connect drain control valve to the drain outlet of filter.
  - Plus Inno-sense filter : Assemble it without flushing.

# TROUBLESHOOTING

The water filtration device may operate abnormally due to minor causes not because of the product malfunction but because of the fact that the user is not familiar with the product use. In such a case, problems can be solved easily even without the help from the Service Center by checking the following items. If you can't solve the problem after checking the following items, please call the Service Center.

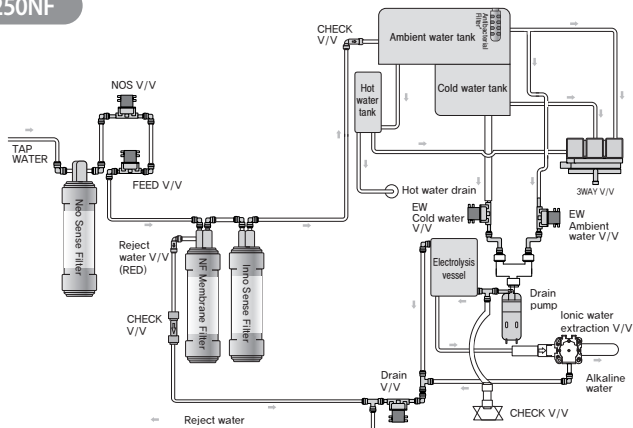
Symptom	Check	Measures to take
The water tastes odd.	• Did you clean the internal water tank?	Clean the internal water tank.
	• You didn't use it for a long time.	Get rid of the saved water and clean the internal water tank. Use ionized water only after extracting and disposing of the water more than twice in ionized water mode.
	• Is it time to change the filter?	Request a filter replacement.
The water is flowing slower.	• The water is flowing slower.	Request a filter replacement.
	• Does the main power connect to the voltage rating that matches it on the rating plate?	Connect the power cord to the voltage rating that matches it on the rating plate.
	• Did you close the main water supply valve?	Open the main water supply valve.
	• Did the temperature of the main water drop suddenly?	The amount of filtrated water decreases as the temperature of the water drops.
There is no cold water.	• Is the Cold Mode button turned on?	Press the Cold Mode button so that it is turned on.
	• Is the Cooling indicator turned on?	Cold Mode is in progress. Please use it in 1 ~ 2 hours.
	• Is the back of the product too close to the wall?	Keep the product away from the wall by at least 10 cm.
Water is not extracted or the amount of water is not correct.	• It may be time to change the filter.	Request a filter replacement.
	• Is the water supply cut or is the water supply valve closed?	Open the main water supply valve.
	• The level is incorrect.	In this case, please contact the After-Service Center.
	• Is the draining or feed hose bent or folded?	Unfold the hose.
	• Is the feed hose too long?	Keep the length of the feed hose equal to or shorter than 5 m.

Symptom	Check	Measures to take
The pH level is incorrect.	• Do you live in an area where the water hardness is high?	The pH is subject to the region and the quality of water.
	• Is the height of the domestic water outlet hose too high?	Keep the height of the domestic water outlet hose equal to or lower than 25 cm from the bottom of the product.
	• Is the amount of draining water small?	In this case, please contact the After-Service Center.
All operations were stopped suddenly while operating.	• Is the water being supplied actively?	Check the water supply valve.
	• Does the main power connect to the voltage rating that matches it on the rating plate?	Connect the power cord to the voltage rating that matches it on the rating plate.
	• Is water overflowing or leaking?	In this case, please contact the After-Service Center.
	• In this case, please contact the After-Service Center.	The amount of filtrated water decreases as the temperature of the water drops.
Water leaks.	• Did the water flow out of the internal water tank cover or from the inside of the product?	Open the top cover to check where the water is leaking, close the water supply valve and contact the After-Service Center.
	• Water leaks when extracting ionized water.	Close the water supply valve and contact the After-Service Center. The ionized water extraction stops automatically.
Did the extraction time exceed 1 minute?	• Ionized water extraction automatically stops after 1 minute to prevent overflowing by mistake. Is the Low level indicator turned on?	There is insufficient water in the internal water tank. In this case, use the water within 1~2 hours.
	• A white substance settles at the bottom when ionized water is left over.	There is insufficient water in the internal water tank. In this case, use the water within 1~2 hours.
A white substance settles at the bottom when ionized water is left over.	• Has the calcium ion in the water combined with the carbonic acid in the water?	This is because of the separation of the calcium mineral in the water depending on the quality of the water. Although drinking the water is safe, if this symptom continues, ask your After-Sales Center how to protect the product.

# SPECIFICATION

Product		The Filtered Water Inonizer
Product		The Filtered Water Ionizer
Model		CHPE-250NF
Standard power voltage		Refer to the rating Plate.
Extraction type		Separate filtrated/ion water extraction type, electronic extraction type
Display part contents		Cleaning indicator, low water level indicator, power saving mode indicator, hot water lock and button lock indicator, hot water indicator, cold water indicator
Major functions		An ion and cold ion water generation function and a water filtration function
Water tank capacity	Hot water	1.2 L
	Ambient water	2 L
	Cold water	2 L
	Total	5.2 L
Electrolysis vessel	Electrode type/quantity	5 Platinum / Titanium electrodes
	Electrode specification	62 mm X 110 mm (0.5 t)
Dimension		281 mm (W) X 523 mm (D) X 511 mm (H)
Working Temperature		5 °C - 35 °C
Production rate (on the basis of the amount of water of the internal water tank)		75 L/d (25 °C, 138 kPa)
Working Pressure		138 kPa – 827 kPa
Net Weight		22 kg





**WARRANTY CARD OR WARRANTY LETTER**  
**ONE YEAR LIMITED WARRANTY**  
**WATER FILTRATION DEVICE CHPE-250NF ("PRODUCT")**

**Model:**

**Serial Number:**

**Customer Name:**

**Date of Purchase:**

**("OWNER")**

---

**What This Warranty Covers:**

Commencing with the date of purchase of the Product and continuing for a period of one year, if manufacturing defects in the Product cause the Product to not operate properly for its intended use, then subject to the exclusions, conditions, and limitations contained herein, COWAY at its sole option will repair or replace the Product.

Decisions as to the extent of repair or replacement required will be made solely by COWAY.

The remedy under this Warranty is available only for that portion of the Product exhibiting defects at the time of the warranty claim. The replacement Product as well as any remaining original Product will be warranted only for the original one year warranty period. This limited warranty applies only to Product used for an application specified by COWAY for the Product and applied in strict accordance with COWAY published specifications in effect at the time of application. IF PRODUCT IS USED FOR OTHER THAN ITS INTENDED PURPOSE, IT IS SOLD AS IS AND WITHOUT ANY EXPRESS OR IMPLIED WARRANTIES, INCLUDING OF MERCHANTABILITY OR FITNESS FOR A PARTICULAR PURPOSE.

**What This Warranty Does Not Cover:**

This Warranty warrants that the Product will be free from manufacturing defects which affect the ability of the Product to operate for its intended use; it is not a warranty that the Product will never require repairs or to undertake responsibilities, liabilities or obligations other than those specifically identified in the preceding section. COWAY is not responsible or liable for personal injury or property damage of any kind, even if arising from a breach of this Warranty.

**Limitations and Exclusions:**

TO THE EXTENT PERMITTED BY APPLICABLE LAW, COWAY DISCLAIMS ANY OTHER WARRANTY EXPRESS OR IMPLIED, THAN THAT GUARANTEES FOR HEREIN. THIS WARRANTY IS IN LIEU OF AND EXCLUDES ALL OTHER WARRANTIES, PROVIDES, CONDITIONS AND REPRESENTATIONS, EXPRESS OR IMPLIED, ORAL OR WRITTEN, STATUTORY OR OTHERWISE, INCLUDING BUT NOT LIMITED TO ANY IMPLIED CONDITIONS OR WARRANTIES AS TO THE MERCHANTABILITY OR FITNESS FOR A PARTICULAR PURPOSE OF THE COWAY PRODUCT. SOME STATES DO NOT ALLOW LIMITATIONS ON HOW LONG AN IMPLIED WARRANTY LASTS, SO THE ABOVE LIMITATION MAY NOT APPLY TO YOU. COWAY DOES NOT AUTHORIZE ANY PERSON INCLUDING ITS REPRESENTATIVES, TO MAKE ANY REPRESENTATION OR TO OFFER ANY WARRANTY, CONDITION OR GUARANTY IN RESPECT OF THE PRODUCT OTHER THAN THIS WARRANTY. THIS LIMITED WARRANTY SHALL BE THE OWNER'S SOLE AND EXCLUSIVE REMEDY AGAINST COWAY AND COWAY SHALL NOT BE LIABLE FOR ANY CONSEQUENTIAL, EXEMPLARY, SPECIAL, INCIDENTAL OR OTHER DAMAGES INCLUDING, BUT NOT LIMITED TO, LOSS OF PROFITS, AND LOSS OF USE. INCIDENTAL, CONSEQUENTIAL AND EXEMPLARY DAMAGES SHALL NOT BE RECOVERABLE EVEN IF THE REMEDIES OR THE ACTIONS PROVIDED FOR IN THIS WARRANTY FAIL OF THEIR ESSENTIAL PURPOSE. SOME STATES DO NOT ALLOW THE EXCLUSION OR LIMITATION OF INCIDENTAL OR CONSEQUENTIAL DAMAGES, SO THE ABOVE LIMITATION OR EXCLUSION MAY NOT APPLY TO YOU. COWAY SHALL NOT BE LIABLE FOR ANY DAMAGES WHICH ARE BASED UPON NEGLIGENCE, BREACH OF WARRANTY, STRICT LIABILITY OR ANY OTHER LEGAL THEORY OF LIABILITY OTHER THAN THE EXCLUSIVE LIABILITY SET FORTH IN THIS WARRANTY

**Limitations on Implied Warranties:**

Any implied warranty of merchantability or fitness for a particular purpose or use, shall be limited to the duration of the foregoing express written warranty.

**Conditions of Warranty:**

COWAY's continuing liability under this Warranty is conditioned upon the following :

- a) The defect or damage is not caused by or is the result of : abnormal use or conditions; improper storage, unauthorized modifications or repair; misuse, neglect, accident, alteration, improper installation or other acts that are not the fault of Coway or the manufacturer of the product or that are not covered by the manufacturer's warranty;
- b) The Product has not been altered, modified or repaired without prior written approval of COWAY;
- c) The OWNER has notified COWAY in writing of any failure of the Product covered by this Warranty within thirty (30) days following such failure;

- d) There has been no misuse, abuse or negligence with respect to the Product on the part of the OWNER.

**Waiver:**

COWAY's failure at any time to enforce or rely upon any of the terms or conditions stated herein shall not be construed to be a waiver of its rights hereunder.

**Obtaining Warranty Service and OWNER'S Duties:**

If the Product fails to operate for its intended purpose, then notify Coway or its Representative Agency within 48 hours or within the next business day after discovery of any defect in the Product. The OWNER must give written notice to COWAY no later than thirty (30) days after a defect is discovered or should by reasonable diligence have been discovered. Claims under this Warranty will require proof of purchase by the OWNER.

**KOREA**

Add : COWAY Co., Ltd.  
136-23, Yugumagoksa-ro, Yugu-eup, Gongju-si,  
Chungcheongnam-do, 32508 Korea  
Tel. : 041-850-7879

**USA**

Add : Coway USA, Inc.  
4221 Wilshire Blvd. #210, Los Angeles, CA 90010  
Call center : 213-386-3033

**THAILAND**

Add : Coway (Thailand) Co., Ltd.  
75/104-106 Ocean Tower 2 38th Fl, Soi Sukhumvit  
19 (Wattana), Sukhumvit Road, Klongtoey Nua,  
Wattana, Bangkok 10110  
Call center : 02-261-0209

**MALAYSIA**

Add : Coway (Malaysia) Sdn. Bhd.  
Level 20, Ilham Tower, No. 8, Jalan Binjai,  
50450 Kuala Lumpur.  
Call center : 1-800-888-111

coway

[www.coway.com](http://www.coway.com)

